

## Specification: Internal Roller Blind Motorisation

### Somfy Sonesse 40 WT Quiet Wired Technology Motor Specification

The roller blind motor shall be a Somfy Sonesse 40 WT manufactured by Somfy SAS, 50 Rue du Nouveau Monde, 74300 Cluses, France and supplied by Somfy Pty. Limited, 9/38-46 South St, Rydalmere NSW 2116. Ph +61 2 8845 7200, [www.somfy.com.au](http://www.somfy.com.au)

Somfy Sonesse 40 WT quiet motors are designed to be connected to Somfy animeo Motor Controllers (or other approved 240VAC control system) and are available in the following torques and speeds;

- 3Nm 30rpm
- 6Nm 20rpm

The selection of the Somfy Sonesse motor model shall be done in conjunction with the roller blind manufacturer and is dependent on the following criteria:

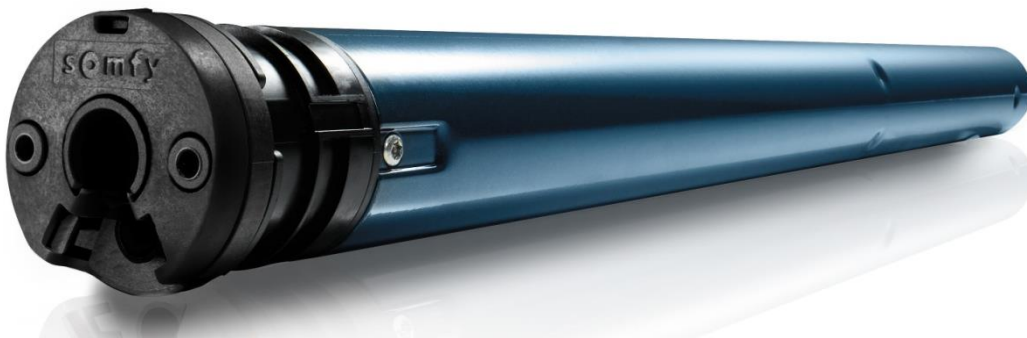
- Dimensions of the blind
- Linked blinds or not
- Type of control system required

**Noise Level:** Noise level power shall be less than 45 dB(A), measured in an end product, with a sonometer located 1M away from the end product, according to Somfy measurements with highest value under load in an upward direction for a minimum of 10 seconds.

**RCM Compliance:** Somfy Sonesse 40 WT motors are RCM compliant.

**RoHS Compliance:** Somfy Sonesse WT motors comply with RoHS Directive, 2002/95/EC: restriction of the use of certain hazardous substances in electrical and electronic equipment.



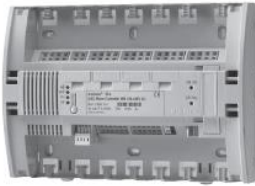

**Installation:** Motors have to be installed, connected and set in accordance with Somfy instructions and in compliance with federal, state or local regulation. Installation contractor is responsible for site measurements and suitability of mounting surface. Can only be installed in an internal environment.





## Control Options:

Somfy Sonesse 40 WT motors may be controlled by any Somfy Motor Controller including;

			
<b>Smoove 1 RTS</b> Wall Mounted RTS Transmitter. Available in many different colours.	<b>Situot RTS</b> 1, 2 & 5 Channel Hand Held Remote Controls.	<b>4AC Motor Controller</b> Controls up to 4 WT motors using IB+/dry contact control technology.	<b>RTS Card</b> Upgrades 4AC Motor Controllers to allow RTS wireless local control.

For details on the full range of Somfy RTS transmitters contact Somfy Projects on +61 2 8845 7200.

## Electrical Wiring:

Somfy Sonesse 40 WT motors are double insulated with two active (black & brown) and neutral (blue) cables and require an interlocking 230VAC switch or relay. It is recommended that it is possible to isolate each motor from power for any servicing of the blind(s). All Somfy motors are available with a discreet in-line power connector.

## Care and Maintenance:

Somfy motors have no maintenance or cleaning requirements when installed and handled as per instruction. Operating conditions are Temperature 0oC to +60oC, Humidity max 85% at 30oC. Somfy motors have a 5 years warranty starting on the date of manufacture of the motor; this warranty can be extended another 2 years when connected by Somfy Electrical Services.



### **For further details contact:**

Jeremie Henry  
Commercial Specification Consultant, Somfy  
M: 0409 606 103  
T: +61 2 8845 7200  
E: [jeremie.henry@somfy.com](mailto:jeremie.henry@somfy.com)

### **Disclaimer:**

This document records Somfy's best knowledge at the date of issue.  
Due to continuing product development Somfy reserves the right to update technical information without notice.  
Somfy's responsibility for the product as shipped is subject to Somfy's Terms of Trade, a copy of which is available upon request.  
© Somfy Pty Limited ACN 003 917 244

### **Version:**

Version 1.0 January 2018

